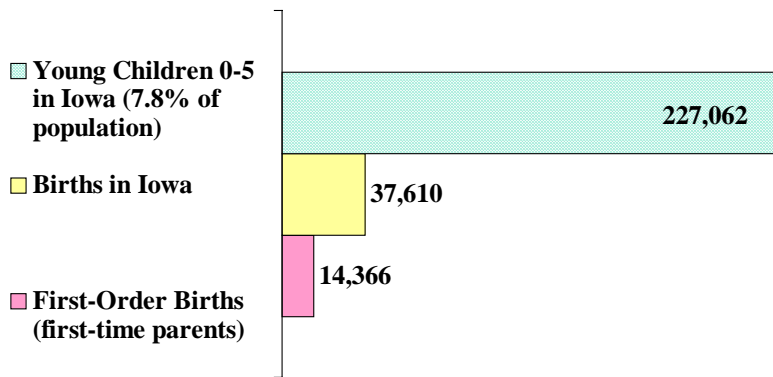


The Earliest Years Count

Iowa's Youngest Residents - A Profile

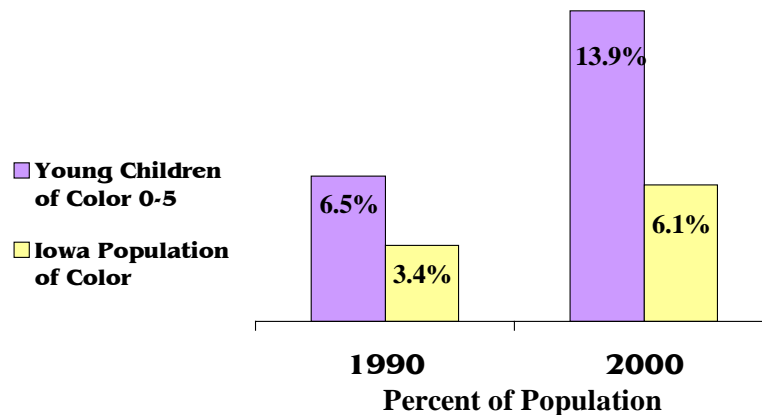


As this slide shows, Iowa's youngest children represent a very significant part of Iowa's overall population. Annually, there are almost 40,000 births in the state, and nearly 15,000 are to first-time parents. As Iowa develops policies and programs to serve Iowa's youngest children, it is essential to consider the degree to which policies and programs reach the populations for which they are designed.

Data derivation: Number of Young Children - US Census data; Births and First-Order Births, vital statistics from the Iowa Department of Public Health.

The Earliest Years Count

Growth in Diversity - Young Children Leading the Way 1990 and 2000 Statistics



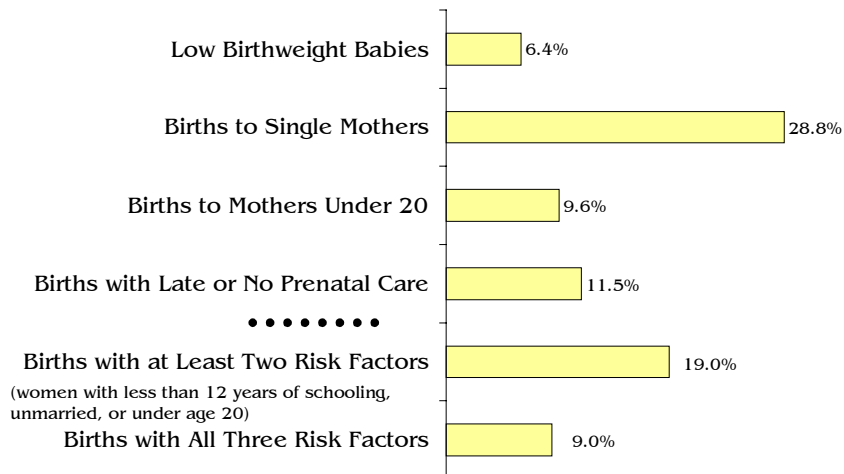
Over the last decade, the biggest change in Iowa's youngest residents is in their racial and ethnic make-up. Iowa is becoming more diverse, and young children are leading the way. In 2000, more than one in eight young children were of color, including 5% Hispanic, 4.7% Black or African American, and 3.3% two or more races.

Iowa's youngest children are more than twice as likely to be of color than the population as a whole. This has major implications to our early care and education and educational systems.

Data derivation: US Census

Nurture Matters

Birth Characteristics - Opportunities for Prevention



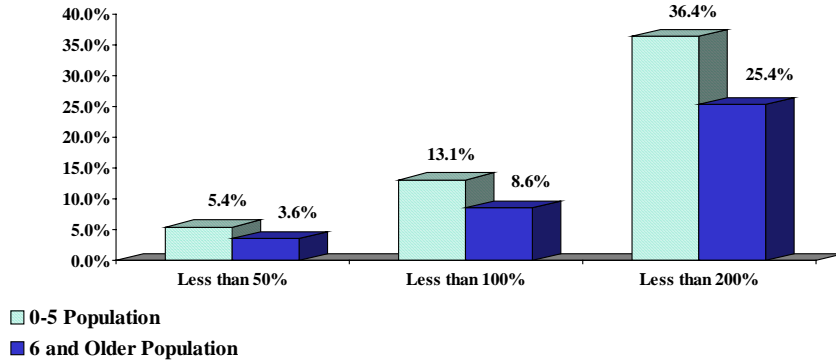
Most children are born healthy and into families that can provide them with all the nurturing and support they need. At the same time, however, some parents struggle to provide the nurturing and support children need, and there are certain risk factors that relate to this need. Single parenting, adolescent parenting, and parenting by parents with low education levels all are known to present risk to child growth and development. Babies born at low birthweight or without adequate prenatal care are vulnerable to health concerns. Research has shown that the more risk factors that exist, the more vulnerable infants are. The data show that almost three in ten babies have some risk factors, and that nearly one in ten has several risk factors that suggest they are particularly vulnerable.

It is also known that almost all of these parents love and want to provide a nurturing environment for their children and are receptive to preventive and developmental services. Policies and practices strengthening the parent's ability to be their child's first teacher can reduce these young children's vulnerability and risk.

Data derivation: Top indicators from vital statistics and 2001 births; indicators for two and three risk factors from an Annie E. Casey Foundation Kids Count report and based upon 1990 statistics. Similar and more current statistics on a state-by-state basis are available in the Foundation's *The Right Start: State Trends: The Condition of Babies and Their Families Across the Nation* (1990-1998).

Nurture Matters

Young Children's Vulnerability: Poverty Status Risks

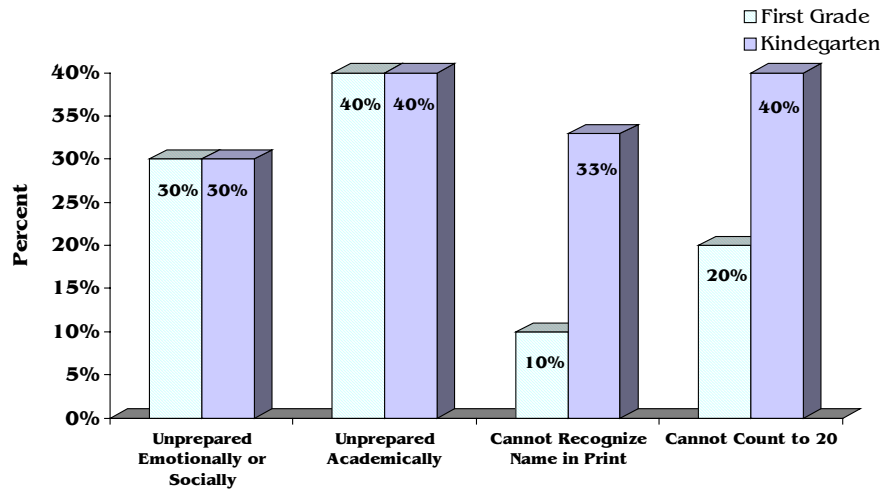


Children also are vulnerable due to the economic conditions in their families. Poverty is hazardous to a child's health, and this applies particularly to very young children. Iowa's young child poverty rate, at 13.1% in 1999, is the highest for any age group in Iowa. For a family of three, that relates to \$13,880 in income. When families have less than half that income, they become exceedingly vulnerable to be able to predictably meet even the basic needs of their children. Many studies also have shown that the poverty level is not really a good measure of what it takes for families to get by, and that 200% of poverty is a better reflection. In this respect, over one-third of Iowa's youngest residents live in conditions where their families are struggling economically to make ends meet, substantially larger than for other age groups.

Data derivation: US Census Bureau

School Readiness is Multidimensional

Colorado School Readiness

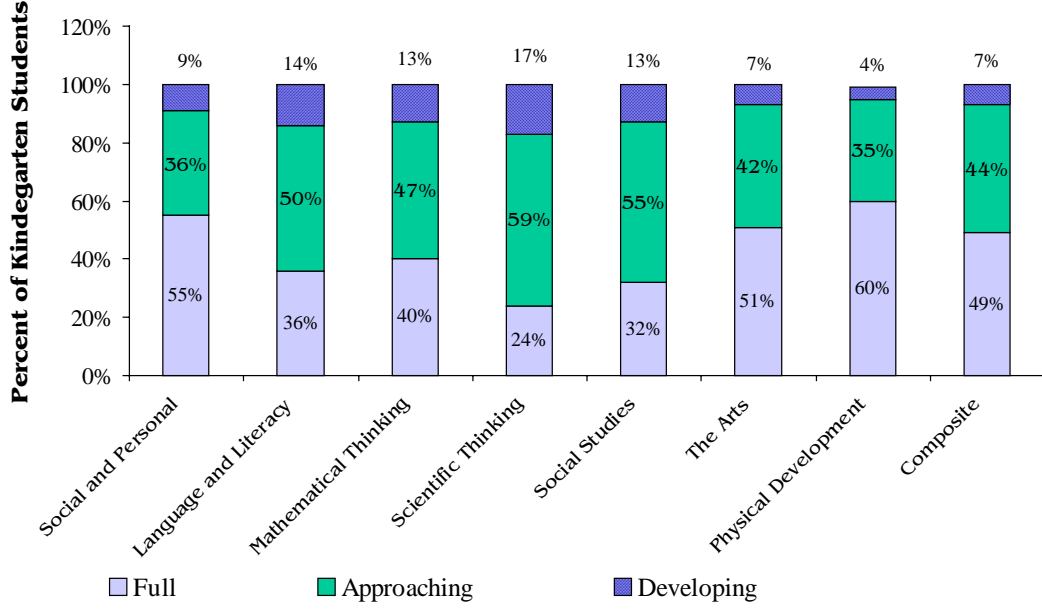


Source: Educare Colorado and Colorado Children's Campaign

Iowa does not have a statewide school readiness assessment that provides state-level data on what children know and can do when they enter school. A number of states, do, however, and slides from Colorado and Maryland are shown here, as they provide multidimensional measures.

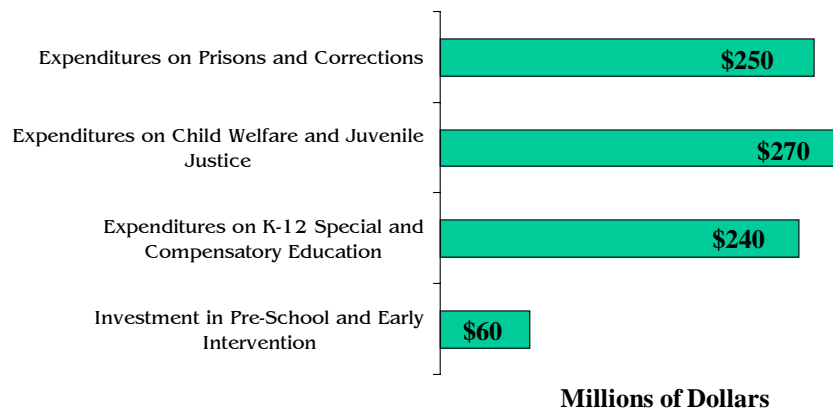
School Readiness is Multidimensional

Maryland School Readiness



School Unreadiness Costs

Public (state and federal) Investments in Prevention and Expenditures on Remediation



Currently, a substantial portion of the state's budget is devoted to addressing problems that, in part, could have been prevented by earlier investments in school readiness. This chart shows some comparative data on what is currently invested in Iowa on young children for pre-school and special education, contrasted with what is spent on youth and adults later in life in remedial, compensatory, or public protection services.

As the chart shows, Iowa's investments in prevention is very small in comparison with its expenditures in remediation. Further, Iowa's corrections budget is one of the fastest growing parts of the state budget. Most people in the adult corrections system have low educational attainment, much of which stemmed from their lack of school readiness at the time of initial school entry.

Data derivation: Iowa budget analysis, with the pre-school and early intervention a combination of Head Start funding, state pre-school programs, and state and federal expenditures on IDEA Part B and C; K-12 expenditures including federal and state special education funds and federal Title I dollars; child welfare and juvenile justice spending a compilation of fifteen different state budget line items (which include IV-B, IV-E, and child welfare Medicaid spending), and prisons and corrections the state corrections budgets. States will need to develop their own version of such a chart.

Parents Work

United States Census Data

	1970	1980	1990	2000	Percent Change 1970-2000	Percent Change 1990-2000
Total Population	203,212,877	226,545,805	248,709,873	281,421,906	38.5%	13.2%
Age 0-4	17,119,245	16,348,254	18,354,443	19,175,798	12.0%	4.5%
Age 5	3,862,405	3,162,691	3,689,533	3,965,103	2.7%	7.5%
Age 6-17	48,948,862	44,244,015	41,560,456	49,152,911	0.4%	18.3%
Age 18-64	113,180,491	137,241,418	153,863,610	174,136,341	53.9%	13.2%
Age 65+	20,101,874	25,549,427	31,241,831	34,991,753	74.1%	12.0%
Total Children			60,879,093			11.5%
Children Living With Two Parents			45,667,594			6.8%
Both Parents Working			28,357,000			3.4%
One Parent Working		Not			Not	4.2%
Neither Parent Working						137.6%
Children Living With Single Parent			Available		Available	25.6%
Parent Working						38.1%
Parent Not Working						-2.2%
Percent Both/Only Parent Working						1.2%
Total Children Less Than Age 6						2.6%
Children Living With Two Parents						-1.4%
Both Parents Working						-5.4%
One Parent Working						-3.7%
Neither Parent Working						156.6%
Children Living With Single Parent			Available		Available	14.8%
Parent Working						38.6%
Parent Not Working				1,669,603		-20.9%
Percent Both/Only Parent Working				58.6%		3.5%
Total Women Age 16 and Over			99,803,358	112,185,795	51.9%	12.4%
With Own Children			31,724,004	34,926,892	22.9%	10.1%
In Labor Force			19,650	24,150,847	108.5%	12.5%
Percent in Labor Force		55.3%	67.7%	69.1%		2.2%
With Own Children Less Than Age 6		13,618,762	15,233,818	15,589,200	13.6%	2.3%
In Labor Force	127,383	6,220,525	9,095,156	9,651,610	128.3%	6.1%
Percent in Labor Force	30.8%	45.7%	59.7%	61.9%	101.0%	3.7%
Median Income Families With Children	\$9,427	\$20,337	\$34,627	\$48,196	411.3%	39.2%
Median Income Families With Children Less Than Age 6	\$8,602	\$17,757	\$31,580	\$44,389	416.0%	40.6%
Total Employment Numbers	76,553,599	97,639,355	115,681,202	129,721,512	69.5%	12.1%
Gross National Product (in billions)	\$1,015.5	\$2,732.0	\$5,832.2	\$9,958.7	880.7%	70.8%
Gross National Product (in billions) (in 2000 dollars)	\$4,439.6	\$5,508.3	\$7,584.5	\$9,958.7	124.3%	31.3%

Substitute State-specific
Chart for National Chart in
Original Presentation

The national table that produced the chart in the PowerPoint presentation is from the US Census Bureau data and can be developed for any state. State-specific data can replace the national data in that table, or be used in addition to or in contrast to the national data.

Quality Matters

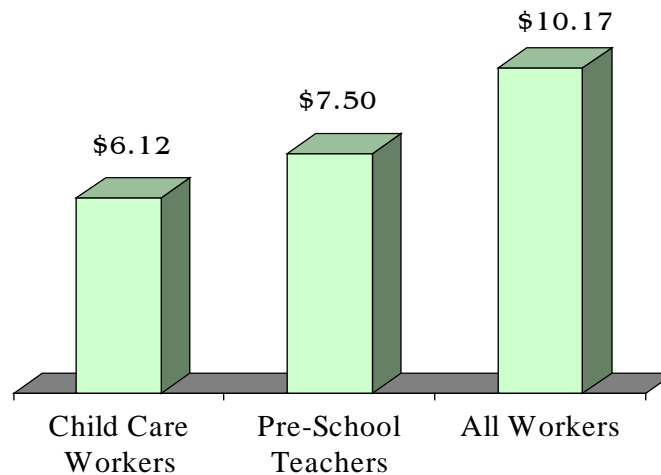
*Available
State Data*

States may have state-specific reports or studies that can speak to child care quality in their state. These can be used in lieu of the circular chart in the PowerPoint presentation.

An alternative or addition is the following slide, which shows child care worker compensation in relation to other compensation in the state.

Quality Matters

Workers in Iowa
Median Hourly Wages, 1998



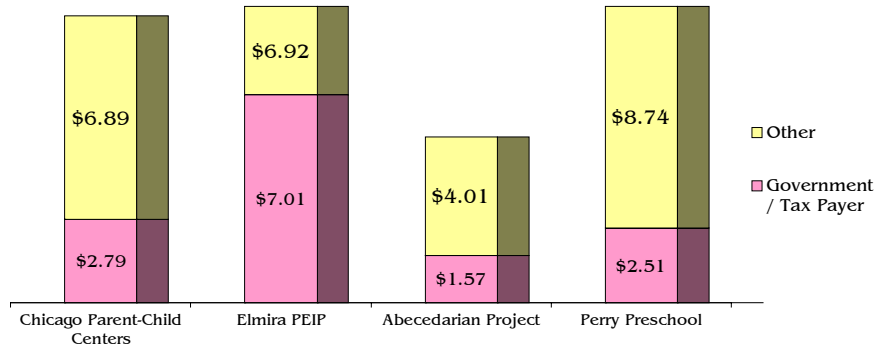
Research is clear that quality in the child care workforce is related to worker compensation, and that compensation represents one indicator of child care quality, although it should not be the only measure of or strategy to improve quality.

This table shows that child care workers in Iowa are among the very lowest paid occupations of all workers in the state, with average wages barely above the minimum wage and only 57% of the average wage of all workers in the state. This low wage base makes it very difficult to attract and retain workers in child care. While pre-school teachers fare somewhat better, their wages still are far below the statewide average for all wages.

Data derivation: Annie E. Casey Foundation 2000 Kids Count data book published this data for each state in the country.

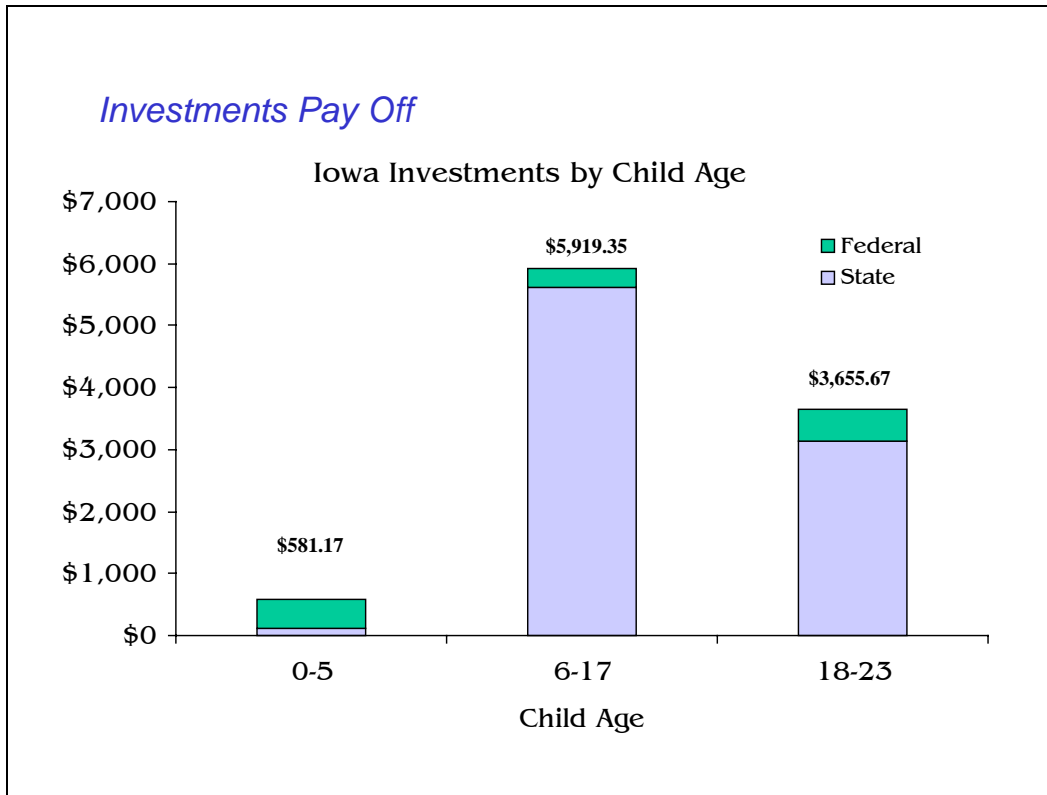
Investments Pay Off

Benefit Costs Table for Four Early Childhood Programs: Dollars Returned for Each Dollar Invested



This is an updated slide available for that in the original PowerPoint, that goes into more detail on the four early childhood studies that have been most cited for their returns on investment. It is based upon a table developed for SECPTAN that provides brief descriptions of each of the studies and their impacts. The table is provided at the end of this attachment.

Data derivations: see attached table.



Despite the value of investing in early childhood, overall public investments in Iowa (federal, state, and school district) on early childhood are very small in comparison with investments in the school-aged and college-aged years. In fact, total investments per young child in early childhood are only one-tenth the investments per child in K-12 and one-quarter the public investments per youth in the college-aged years.

Correcting this disparity will require substantial additional investments in early childhood, but these investments can produce great taxpayer benefits in the future.

Data derivation: Constructing such a chart requires state-level fiscal analysis. Currently, fifteen states are participating with the Child and Family Policy Center and Voices for America’s Children in producing such charts, and the methodology for any state to construct a comparable chart will be available by the end of the year.